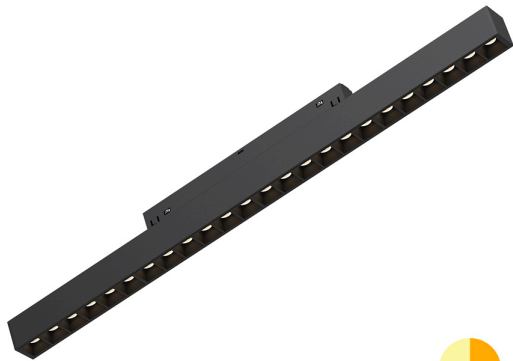


Braytron

TECHNICAL DATA SHEET

| | |
|-------------|--|
| MODEL | BD60-01491 |
| DESCRIPTION | BRY-M20-LN440-24W-48VDC-TUYA-LAN-BLC-MAG. LINEAR |



Braytron

LED
90 CRI

LED MAGNETIC LINEAR
MODEL NO: BD60-01491

24w - 2040lm

3CCT SWITCH
3000K 4000K 6000K

440
45
22
LNS440
tuya

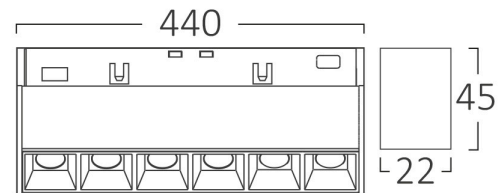
ENERGY

BRAYTRON
BD60-01491

A
B
C
D
E
F
G

24
kWh/1000h

2019/2015



BRAYTRON SRL

MUNICIPIUL BUCUREȘTI, SECTOR 6, BLD. IULIU MANIU, NR.616, CORP B, ET.1,BUCUREȘTI,Sector 6(RO)
info@braytron.com
www.braytron.com

General Characteristics

| | | |
|-------------|---|----------------|
| Model No | : | BD60-01491 |
| Main Family | : | Track Lighting |
| Sub Family | : | LED Magnetic |
| Type | : | Track |
| Body Color | : | Black-Black |
| Lamp Shape | : | Directional |
| Warranty | : | 3 Years |
| Class | : | CLASS III |
| IP | : | IP20 |

Product Characteristics

| | | |
|-----------------------------|---|------|
| Wattage | : | 24 |
| Color Temperature | : | 3IN1 |
| Color Rendering Index (CRI) | : | ≥90 |
| Energy Efficiency Level | : | G |

Electrical Characteristics

| | | |
|---------------------|---|---------------|
| Lifetime | : | 30000 h |
| Voltage | : | 48V DC |
| Material | : | Aluminium-PC |
| Working Temperature | : | -20°C ~ +40°C |

Dimensions & Weight

| | | |
|-----------|---|--------|
| P. Length | : | 440 mm |
| P. Width | : | 22 mm |
| P. Height | : | 45 mm |
| Weight | : | 209 gr |

Package Informations

| | | |
|---------|---|---------------|
| N.W. | : | 4,18 kgs |
| G.W. | : | 5,3 kgs |
| PCS/CTN | : | 20 |
| Length | : | 46 cm |
| Width | : | 22,5 cm |
| Height | : | 16 cm |
| EAN | : | 5949097750816 |

BRAYTRON SRL

MUNICIPIUL BUCUREȘTI, SECTOR 6, BLD. IULIU MANIU, NR.616, CORP B, ET.1,BUCUREȘTI, Sector 6(RO)
info@braytron.com
www.braytron.com