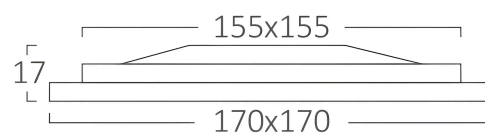
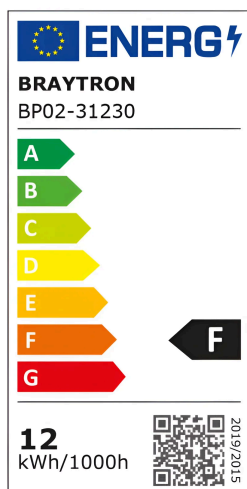
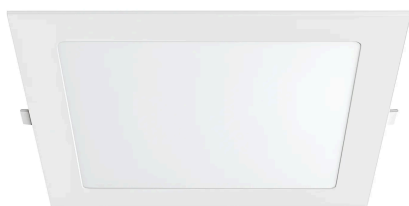


Braytron

FISA TEHNICA

MODEL BP02-31230

DESCRIERE BRY-SMD-CSD-12W-6INC-WHT-6500K-LED PANEL LIGHT



BRAYTRON SRL

MUNICIPIUL BUCUREȘTI, SECTOR 6, BLD. IULIU MANIU, NR.616, CORP B, ET.1,BUCUREȘTI,Sector 6(RO)
info@braytron.com
www.braytron.com

General Characteristics

Model No	:	BP02-31230
Main Family	:	Indoor Lighting
Sub Family	:	LED Small Panel
Type	:	Recessed Panel
Body Color	:	White
Lamp Shape	:	Non-Directional
Dimmable	:	Not-Dimmable
Light Source	:	LED
Warranty	:	2 Years
Class	:	CLASS II
IP	:	IP20

Product Characteristics

Wattage	:	12
Color Temperature	:	6500K
Quse Lumen	:	910
Color Rendering Index (CRI)	:	≥80
Energy Efficiency Level	:	F
Beam Angle	:	120°

Electrical Characteristics

Lifetime	:	20000 h
Voltage	:	220-240V 50/60Hz
Power Factor	:	>0,5
Material	:	Aluminium
Working Temperature	:	-20°C ~ +40°C

Dimensions & Weight

P. Length	:	170 mm
P. Width	:	170 mm
P. Height	:	17 mm
Weight	:	232 gr

Package Informations

N.W.	:	9,3 kgs
G.W.	:	11,75 kgs
PCS/CTN	:	40
Length	:	42,5 cm
Width	:	31,5 cm
Height	:	38 cm
EAN	:	5949097704611